

*How to set up and consolidate  
a Logistics Competence Centre (LoCC)*

Mr. Martin Brandt,  
Secretary General of the European Network  
of Logistics Competence Centres,  
KLOK Kooperationszentrum Logistik e. V, Stuttgart



**KLOK**

Kooperationszentrum  
Logistik e. V.

## „Open ENLoCC“



- Open ENLoCC, the European Network of Logistics Competence Centres, is an open network of regional logistics competence centres in the field of logistics, run by public authorities or similar bodies.
- The main task of the network is international exchange of experience and knowledge between its participants and promotion of a higher level of cooperation among European institutions.



# *Logistics Competence Centre (LoCC)*

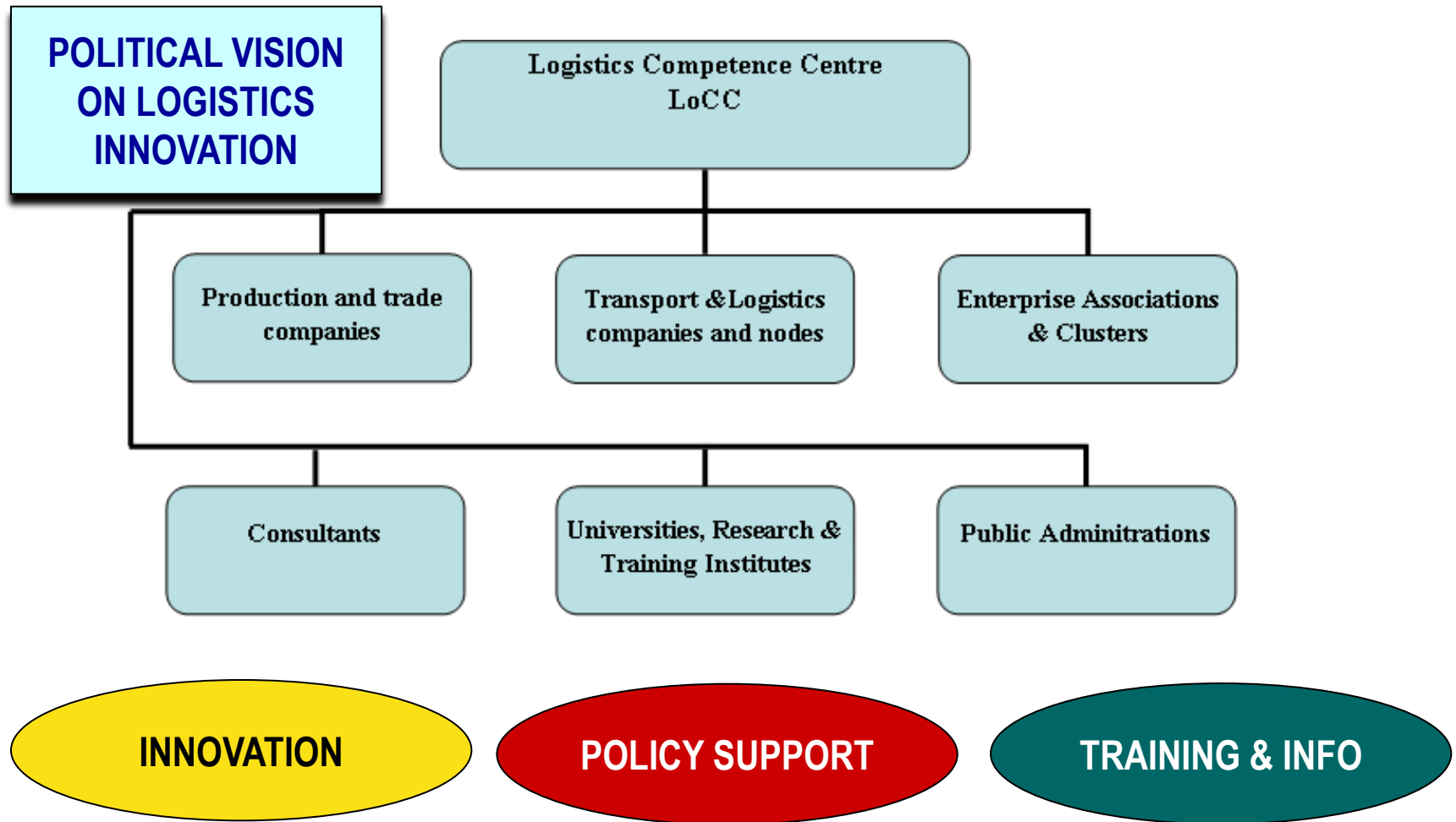


## A LoCC...

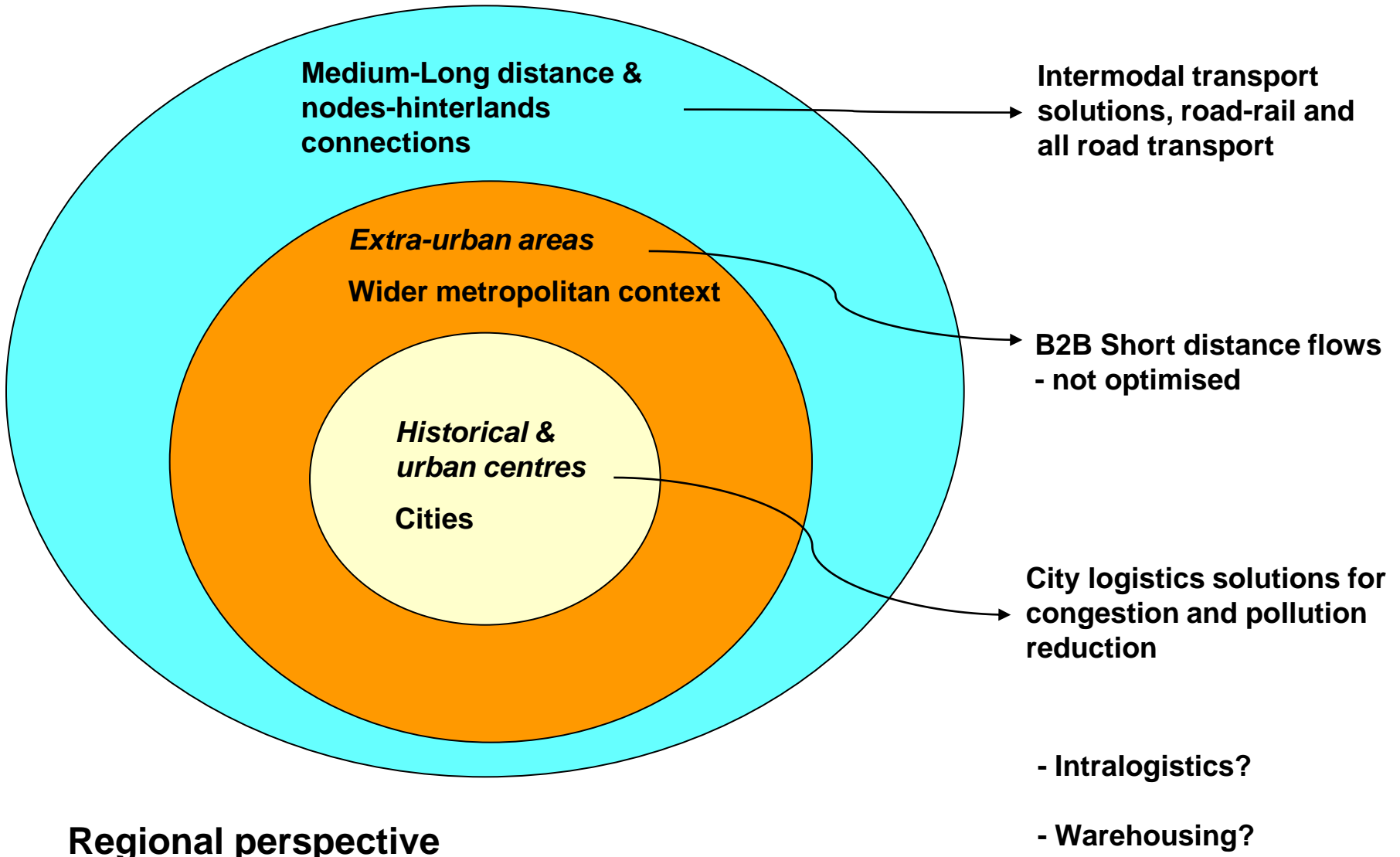
- is a network-oriented promoter of the economic development for logistics in the region,
- initiates, promotes, coordinates and runs a partner-network of the logistics key players of its region,
- provides a common “forum” where stakeholders with heterogeneous missions and roles can meet and define shared strategies and policies,
- is a public or a semi-public body and holds a public mission,
- has an interdisciplinary role,
- faces and tries to solve the logistics problems which raise at regional and transnational level,
- works on specific projects.



*Regional joint between public sector,  
business and research*



# Action fields: Different territorial levels



**Regional perspective**

## *The specific competence*

- Goods flows are not well known.
- Organization of goods transport is not well known.
- Goods transport is often thought of in terms of bad analogies to passenger transport.
- Goods transport is partly transport, partly logistics, always of local and regional impact, and often involves other regions.
- Most knowledge is about technical details and technologies.

=> There is a demand for a competence centre.



# *The organization*



A LoCC typically is a rather small unit.

- Technically, in legal and organizational terms, it is not so difficult to set up.
- A LoCC can grow out of an existing organization, such as an economic development agency, a logistics initiative, or a (university) institute.
- Or a LoCC can be newly founded by interested institutions.
- Important: Who are the stakeholders?



# *LoCC out of an existing organization: Experience*



- Easy to start.
- Basic competence available from beginning.
- Less economic pressure.
  
- Perhaps never gets an independent role.
- Tends to remain a sub-unit of the organization.
- Perhaps never grows into a stable unit.
- Competence also just sub-competence.



# *LoCC as a new organization: Experience (including KLOK experience)*



- Intense preparations and difficult negotiations.
- Financial instability in the first years.
- Role and competence are questioned during the first years.
- Need for independent knowledge base.
- Need for independent standing.

⇒ The tough way, but very good and specific results when successful.



# *How is the income generated?*

## **An institution survives only if people are interested in it.**

- ⇒ How to interest people for goods logistics topics?
- Round table „Circle for goods mobility“:
  - Regular meetings,
  - one topic,
  - free debate,
  - no decisions.
- Expert opinion below the level of a full report.
- Structuring of questions and topics.
- Network for international contacts.
- ⇒ Many institutions on all levels: Local, regional and state.
- ⇒ Private companies?

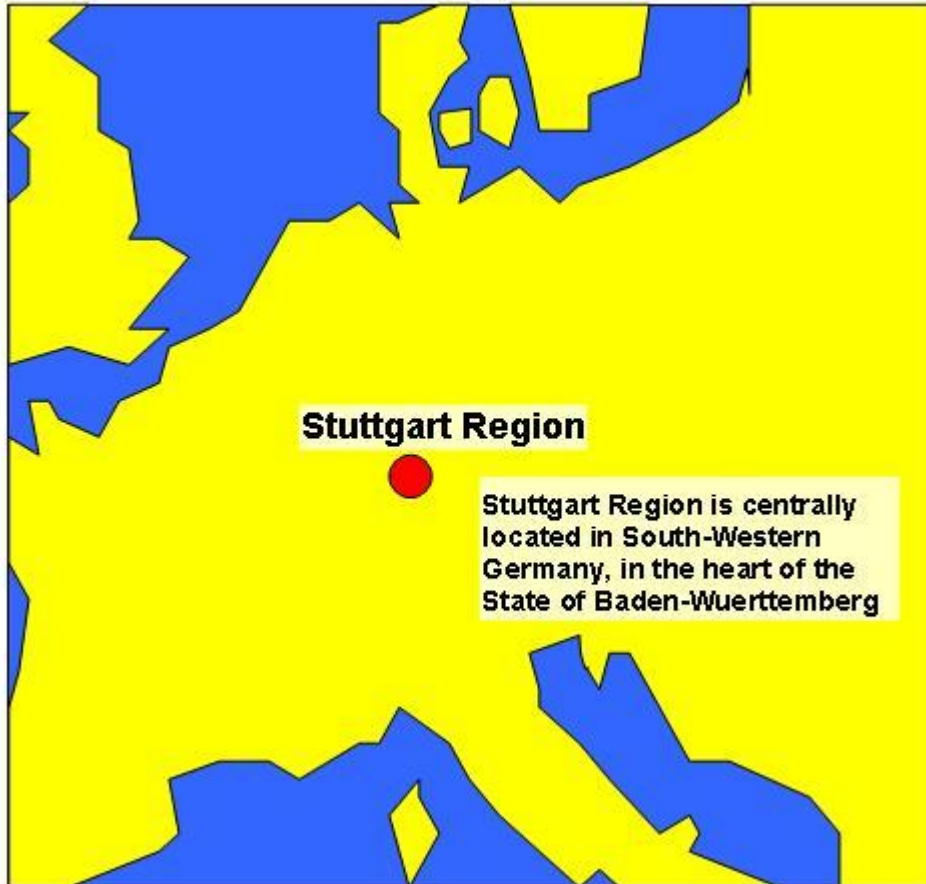


# *How is the income generated?*



- Institutional budget, including membership fees
  - Typically the smaller part
  - Indispensable for regular work
- Project income
  - Generated under market conditions
  - Often needs co-financing
  - Takes time to accumulate
- Income from institutional tasks
  - Usually small
  - Not just for money, but also to generate knowledge





## What and where is „Stuttgart Region“?

- Stuttgart Region, with 2.6 m inhabitants, is an institutional body, covering all towns and townships within the five counties around Stuttgart, plus Stuttgart itself. The region has its own parliament, whose members are directly elected by the people.
- Legal competences of the region are, among others, within regional planning, transport and economic development.

# What is „KLOK e.V.“?

KLOK is one of the region's "competence centres".  
It covers the field of logistics.

- **Virtual Dimension Center (VDC)**  
Virtuelle Realität, Simulation, kooperatives Engineering  
Fellbach
- **Packaging Excellence Center (PEC)**  
Verpackungs- und Automatisierungstechnik  
Waiblingen
- **Mechatronik**  
Göppingen
- **BzA-BW**  
Brennstoffzelle  
Stuttgart
- **KLOK**  
Logistik  
Kornwestheim
- **BITZ**  
Telekommunikation, Nachrichten- und Sicherheitstechnik  
Backnang
- **KTMC**  
Telematik, Mobile Computing, Customer Care  
Filderstadt, Stuttgart

## Kompetenzzentren in der Region Stuttgart



- **KTMC**  
Telematik, Mobile Computing, Customer Care  
Filderstadt, Stuttgart
- **KINET**  
Nachhaltige Energie-Technik  
Esslingen am Neckar
- **KURS**  
Umwelttechnik  
Stuttgart, Vaihingen/Enz
- **Technische Textilien**  
Denkendorf
- **mediafaktor filder**  
Druck und Verlag  
Leinfelden-Echterdingen, Ostfildern
- **NAC**  
Online Services  
Stuttgart
- **RegioVDC**  
Facility Management  
Geislingen a.d. Steige
- **SBS**  
Software  
Böblingen, Sindelfingen

# What is „KLOK e.V.“?



KLOK work plan:

- Preparing information regarding regional logistics, especially transport logistics,
  - running the secretariat of “Open ENLoCC”, the European network of logistics competence centres,
  - participation in logistics projects of public interest (e.g. “C-Liege”),
  - raising public awareness of logistics,
- 
- **running the state-wide network of logistics “LogBW”.**



# What is „KLOK e.V.“?



Members of KLOK association are:

- Stuttgart Region Economic Development Corporation (WRS)
- Town of Kornwestheim
- Town of Ludwigsburg
- Stuttgart University
- Stuttgart Harbour
- State Association of Industry
- State Association of Logistics
- Harbour of Plochingen
- Town of Plochingen



LogBW is a network including a wide range of institutions, including logistics providers.



# Contact



## Secretariat of Open ENLoCC

KLOK Kooperationszentrum Logistik e.V.  
Stammheimer Straße 10  
70806 Kornwestheim  
GERMANY

+49 7154 965 0051

[www.openenlocc.net](http://www.openenlocc.net)

